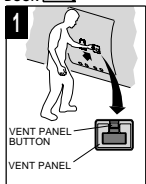


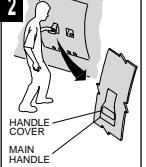
AIRCRAFT RESCUE & FIREFIGHTING INFORMATION

DOOR 1

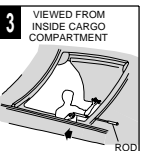


PUSH DOWN THE VENT PANEL BUTTON.
PUSH IN THE VENT PANEL.

2

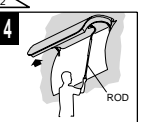


PUSH IN THE MAIN DOOR HANDLE COVER.
PULL THE MAIN DOOR HANDLE UP TO RELEASE THE DOOR.



OPEN AND HOLD THE DOOR.
REMOVE ROD FROM STORAGE.

2



ENGAGE THE ROD TO DOOR'S ROD ATTACHMENT AND LIFT DOOR TO FULLY OPEN POSITION WITH ASSISTANCE OF ROD. CHECK IF DOOR IS LOCKED IN FULLY OPEN POSITION. STOW THE ROD.

LINEAGE

FLIGHT CREW: 2
CABIN CREW: 1
PASSENGER: UP TO 19

HEIGHT: 10.50 m
WING SPAN: 28.70 m
LENGTH: 38.70 m

FUEL TANKS CAPACITY: 22000 Kg (48500 lb)

FUEL TYPE:

- ASTM D1655 - JET A AND JET A1
- ANP 12003 - QAV-1
- MIL-T-83133A - JP-8
- GB 6537-94 - Number 3 Jet Fuel
- STAGNAG 3747 ED5 - F-34 and F-35

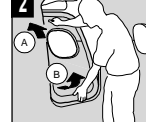
HYDRAULIC RESERVOIR AND HYDRAULIC ACCUMULATOR

OVERWING EMERGENCY EXITS

1

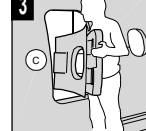


2



A PUSH THE OVERWING EMERGENCY EXIT (OWE) DOOR
B HOLD AND REMOVE IT

3

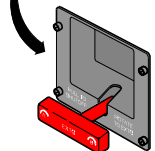


C PUT OVERWING EMERGENCY EXIT (OWE) DOOR AWAY FROM THE PASSAGE.

FIRE IN THE ENGINE/APU/CARGO

LIFT THE GUARD AND PRESS BUTTON TO ACTIVATE THE FIRE EXTINGUISHING SYSTEM OF THE CARGO COMPARTMENT

LIFT THE GUARD AND PRESS BUTTON TO ACTIVATE THE FIRE EXTINGUISHING SYSTEM OF THE APU.

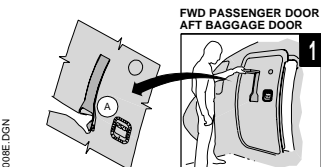


CREW OXYGEN CYLINDER (IN FWD CARGO COMPARTMENT)

RIGHT OR LEFT ENGINE

PULL THE HANDLE TO SHUTOFF THE ENGINE. ROTATE THE HANDLE COUNTERCLOCKWISE TO ACTIVATE THE FIRE EXTINGUISHING SYSTEM.

BATTERY ELECTRONIC COMPARTMENT

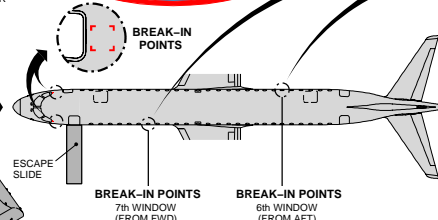
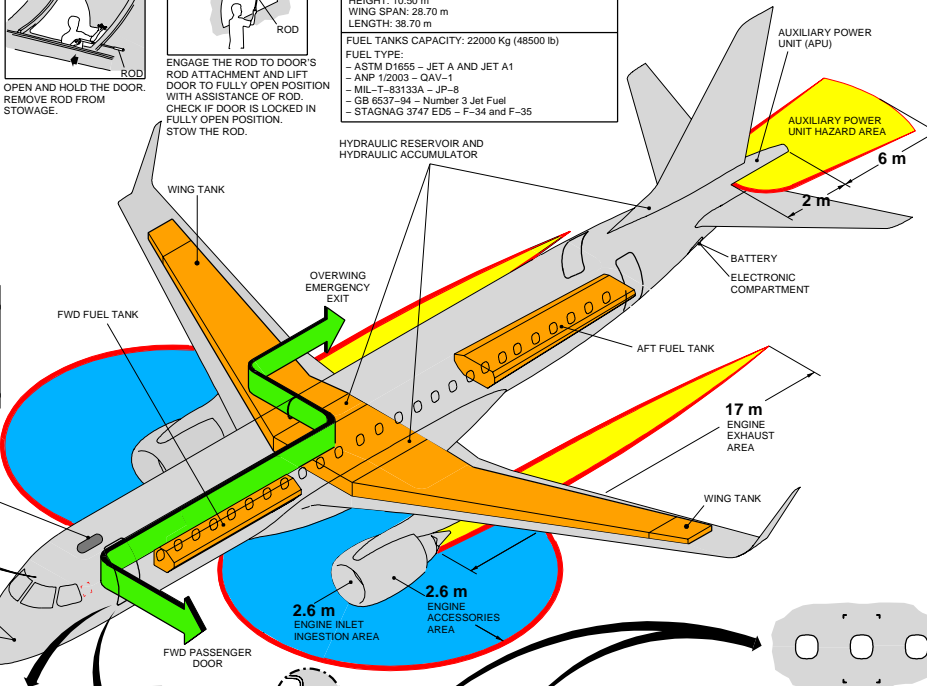


A ENSURE VENT FLAP IS CLOSED (FLUSH).
B PUSH THE COVER AND GRAB THE HANDLE.
C LIFT THE MAIN HANDLE ALL THE WAY UP.
D FULLY PUSH THE DOOR AND LOCK IT OPEN.



ESCAPE SLIDE

2 THIS STEP IS APPLICABLE ONLY FORWARD CARGO DOOR.



BREAK-IN POINTS
7th WINDOW (FROM FWD)
BREAK-IN POINTS
6th WINDOW (FROM AFT)

BREAK-IN POINTS
Lineage® 1000 1000E
BY EMBRAER
ARFF - 3498
30 SEPTEMBER 2008
REVISION 04 - 03 DECEMBER 2013

In connection with the use of this document, Embraer does not provide any express or implied warranties and expressly disclaims any warranty of merchantability or fitness for a particular purpose. Copyright © 2013 by EMBRAER S.A. All rights reserved.

EM70IFR00000008.DGN